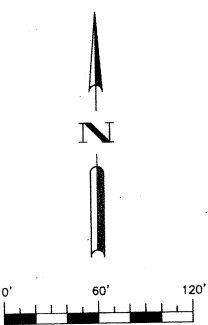


STATE OF FLORIDA  
COUNTY OF PALM BEACH  
THIS PLAT WAS FILED FOR  
RECORD AT \_\_\_\_\_ M.  
THIS \_\_\_\_\_ DAY OF \_\_\_\_\_  
A.D. 20\_\_\_\_ AND DULY RECORDED  
IN PLAT BOOK \_\_\_\_\_ ON  
PAGE(S) \_\_\_\_\_  
SHARON R. BOCK  
CLERK AND COMPTROLLER  
BY: \_\_\_\_\_  
DEPUTY CLERK



MATCH LINE (SEE SHEET 6 OF 7)

**ABBREVIATIONS:**

- A = ARC LENGTH
- CL = CENTERLINE
- CHD. = CHORD
- D = DELTA ANGLE
- ESMT. = EASEMENT
- F.P.L. = FLORIDA LIGHTING AND POWER
- I.R. = IRON ROD
- I.R.C. = IRON ROD WITH CAP
- LB = LICENSED BUSINESS
- PL = PROPERTY LINE
- P.B.C.O.R. = PALM BEACH COUNTY OFFICIAL RECORDS
- P.B. = PLAT BOOK
- PCP = PERMANENT CONTROL POINT
- PG. = PAGE
- PRM = PERMANENT REFERENCE MONUMENT
- PSM = PROFESSIONAL SURVEYOR & MAPPER
- R = RADIUS
- RGE. = RANGE
- R/W = RIGHT OF WAY
- SEC. = SECTION
- TWP. = TOWNSHIP

**LEGEND:**

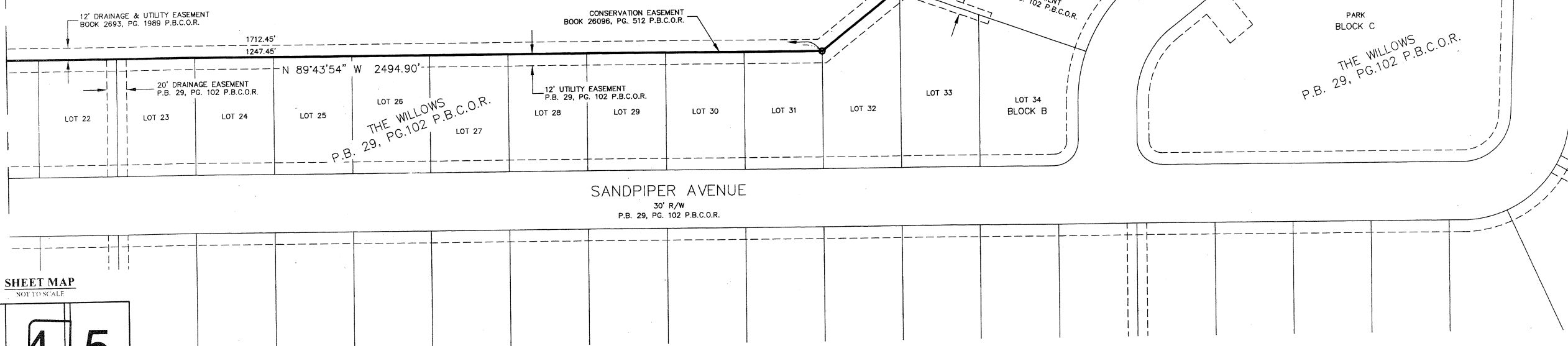
- = FOUND MONUMENT AS NOTED
- = SET 5/8" I.R.C STAMPED "ERDMAN ANTHONY LB7334"
- = SET 5/8" I.R.C STAMPED "ERDMAN ANTHONY LB7334 PRM"
- = SET MAG NAIL WITH WASHER STAMPED "EA LB7334"
- = SET MAG NAIL WITH WASHER STAMPED "EA LB7334 PRM"
- = SET MAG NAIL WITH WASHER STAMPED "EA LB7334 PCP"

MATCH LINE (SEE SHEET 2 OF 7)

LOT 4  
134.678± ACRES  
5,866,594 SQUARE FEET

CONSERVATION EASEMENT  
BOOK 26096, PG. 512 P.B.C.O.R.

LOT 4  
134.678± ACRES  
5,866,594 SQUARE FEET



SHEET MAP  
NOT TO SCALE

